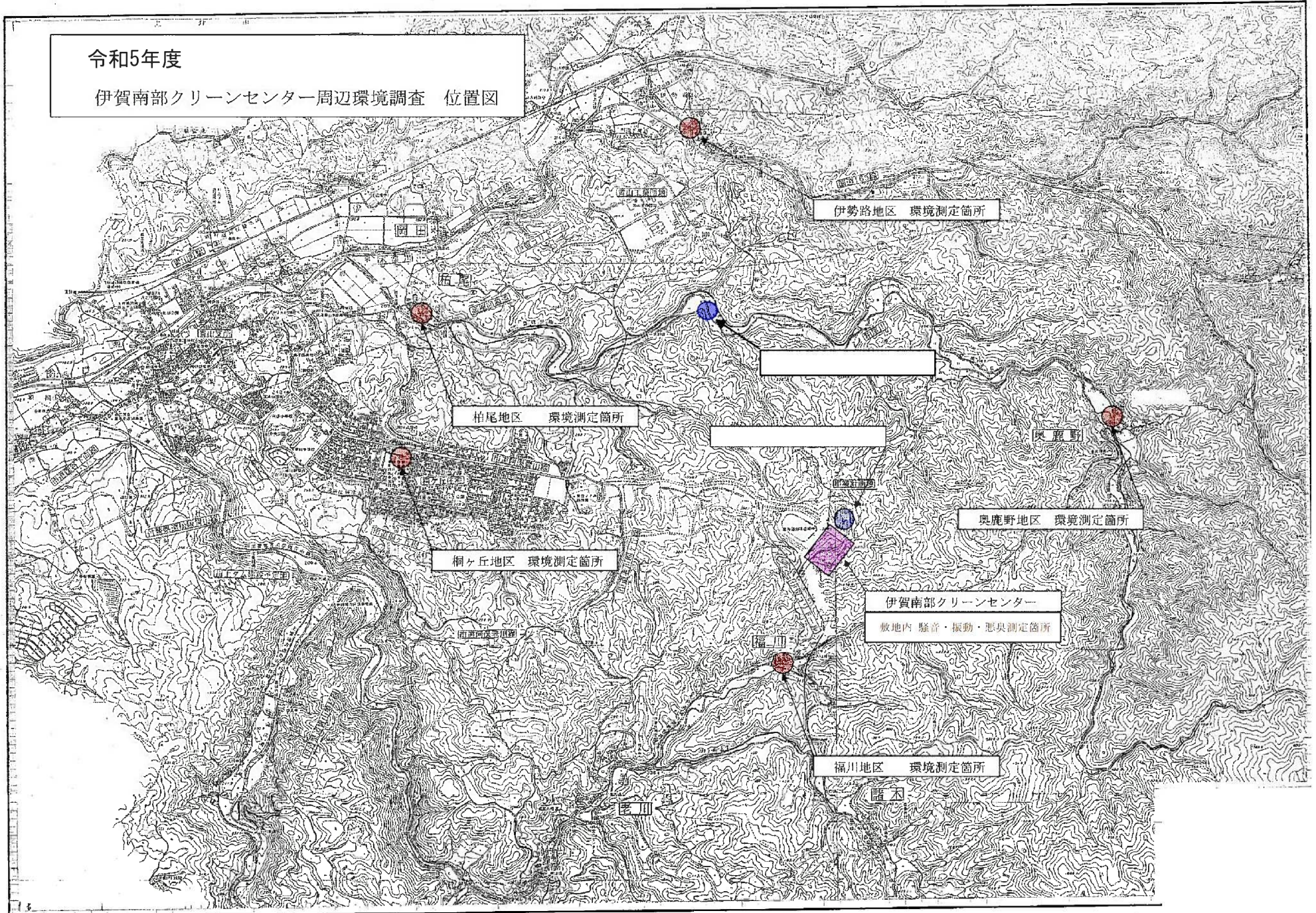


令和 5 年度（ ）第 232731 号  
伊賀南部クリーンセンター周辺環境調査業務委託

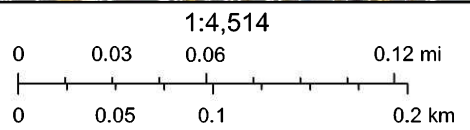
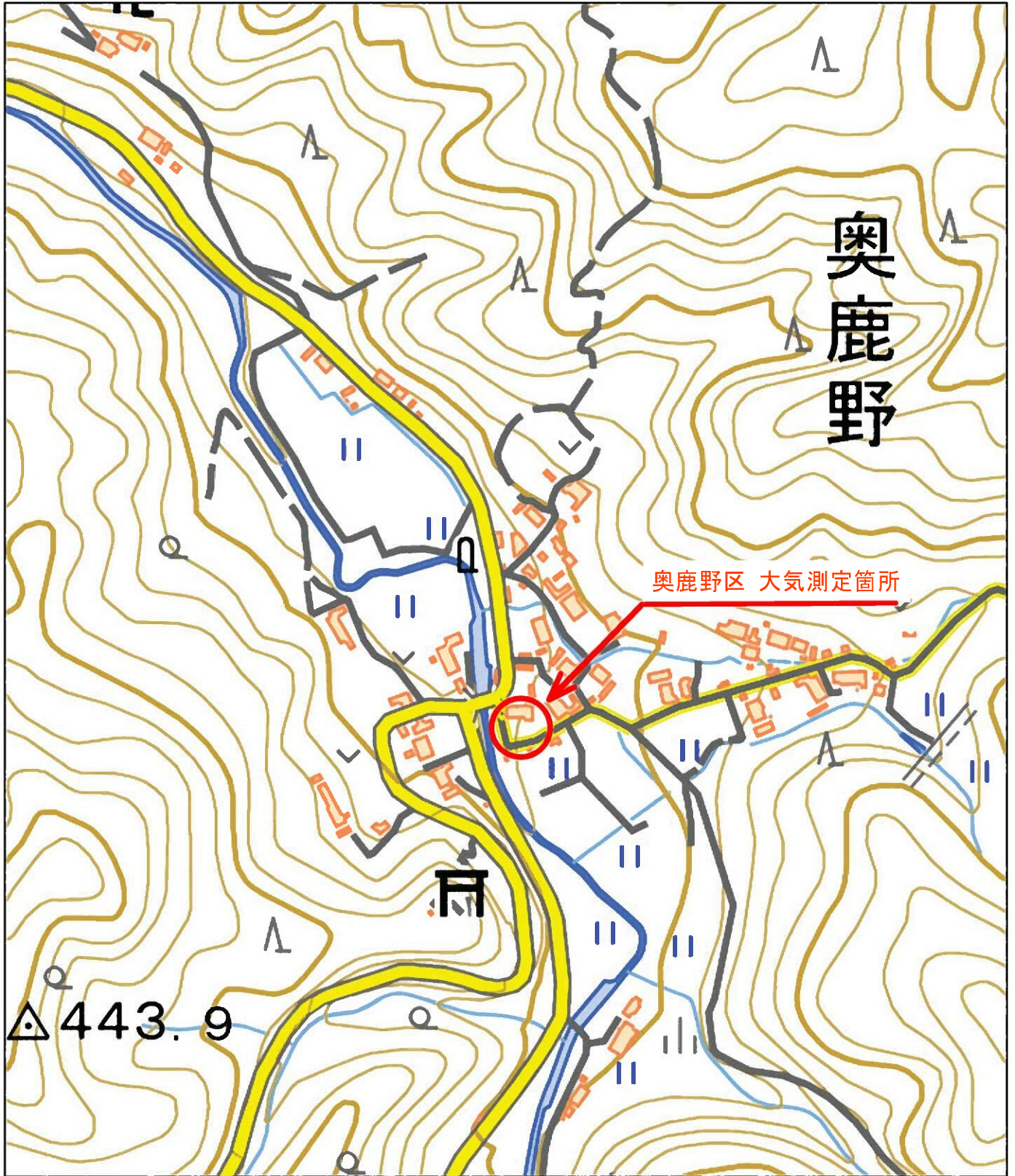
測定位置図

令和5年度

伊賀南部クリーンセンター周辺環境調査 位置図

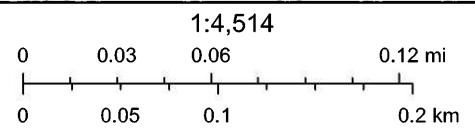
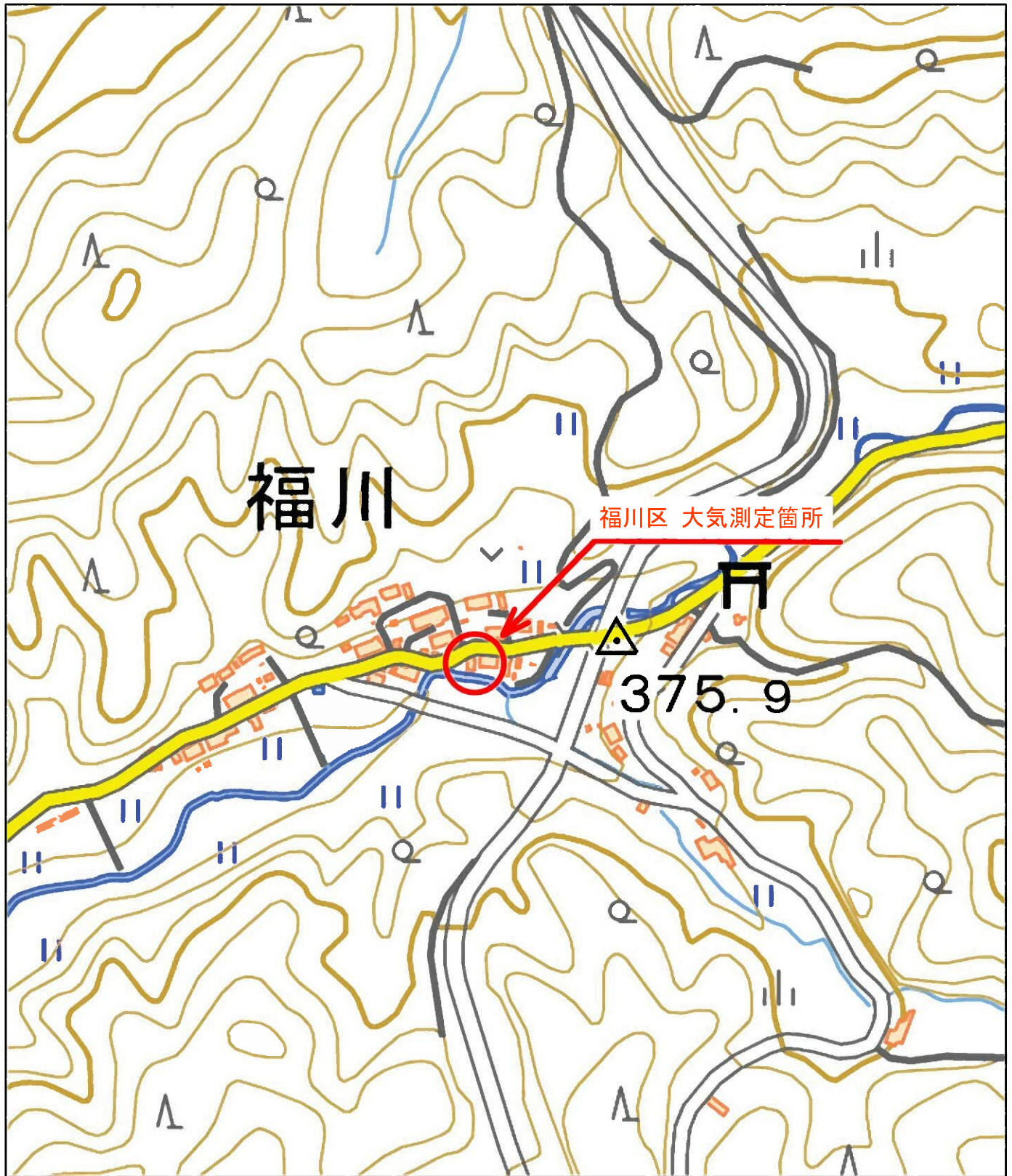


# 奥鹿野区 測定箇所



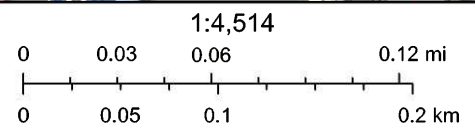
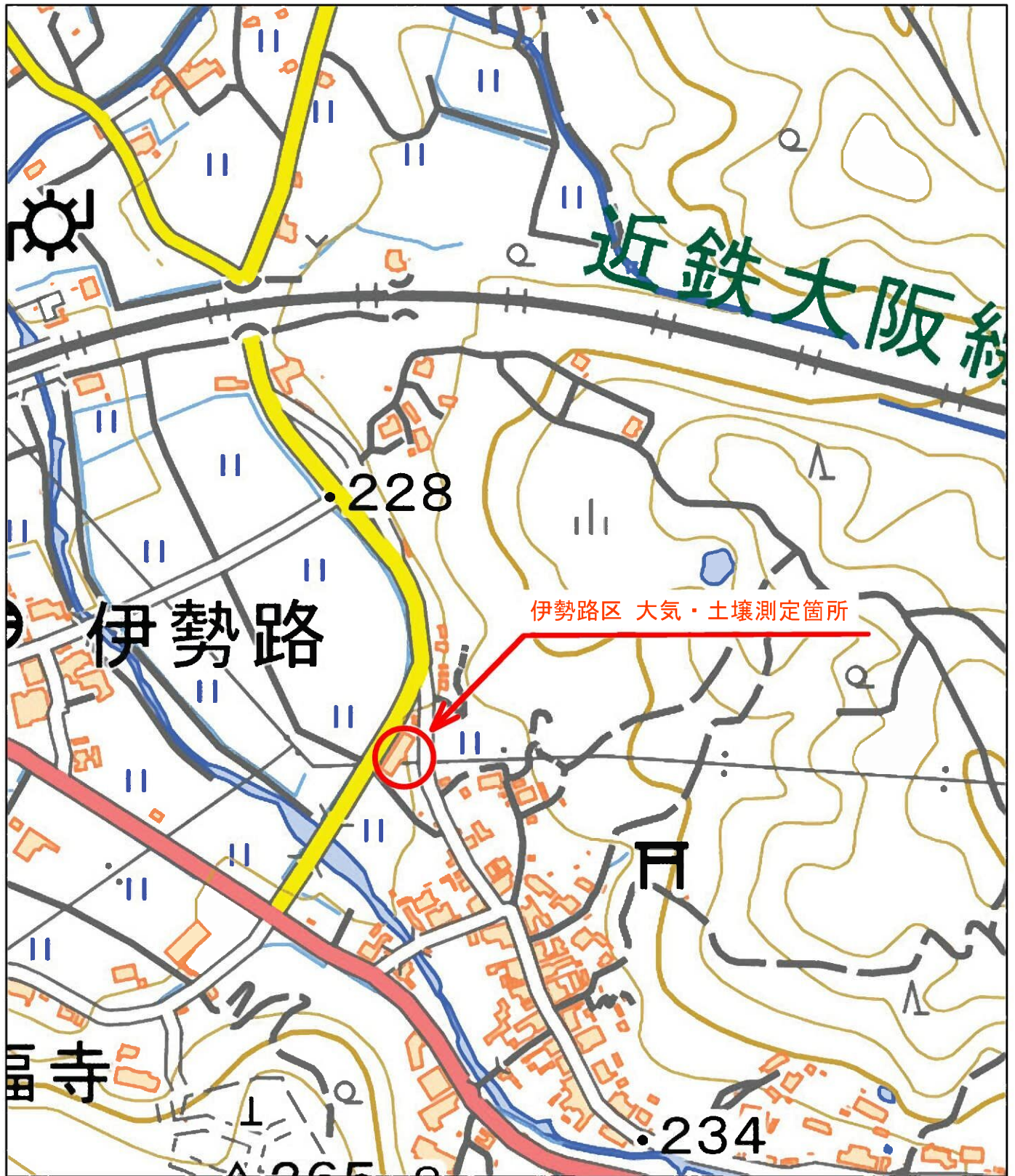
© OpenStreetMap (and) contributors, CC-BY-SA, Sources: Esri, HERE, Garmin, USGS, Intermap, INCREMENT P, NRCan, Esri Japan, METI, Esri China (Hong Kong), Esri Korea, Esri (Thailand), NGCC, (c) OpenStreetMap contributors, and the GIS User Community

# 福川区 測定箇所



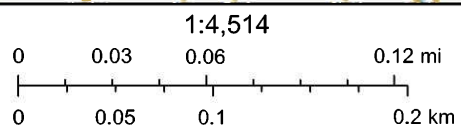
© OpenStreetMap (and) contributors, CC-BY-SA, Sources: Esri, HERE, Garmin, USGS, Intermap, INCREMENT P, NRCan, Esri Japan, METI, Esri China (Hong Kong), Esri Korea, Esri (Thailand), NGCC, (c) OpenStreetMap contributors, and the GIS User Community

# 伊勢路区 測定箇所



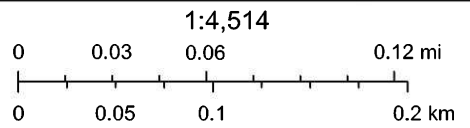
© OpenStreetMap (and) contributors, CC-BY-SA, Sources: Esri, HERE, Garmin, USGS, Intermap, INCREMENT P, NRCan, Esri Japan, METI, Esri China (Hong Kong), Esri Korea, Esri (Thailand), NGCC, (c) OpenStreetMap contributors, and the GIS User Community

# 柏尾区 測定箇所



© OpenStreetMap (and) contributors, CC-BY-SA, Sources: Esri, HERE, Garmin, USGS, Intermap, INCREMENT P, NRCan, Esri Japan, METI, Esri China (Hong Kong), Esri Korea, Esri (Thailand), NGCC, (c) OpenStreetMap contributors, and the GIS User Community

# 桐ヶ丘 測定箇所

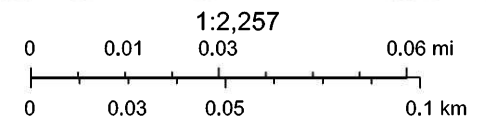


© OpenStreetMap (and) contributors, CC-BY-SA, Sources: Esri, HERE, Garmin, USGS, Intermap, INCREMENT P, NRCan, Esri Japan, METI, Esri China (Hong Kong), Esri Korea, Esri (Thailand), NGCC, (c) OpenStreetMap contributors, and the GIS User Community

# 騒音・振動・悪臭調査 測定箇所



2020年10月6日 10:46:59



© OpenStreetMap (and) contributors, CC-BY-SA. Sources: Esri, HERE, Garmin, USGS, Intermap, INCREMENT P, NRCan, Esri Japan, METI, Esri China (Hong Kong), Esri Korea, Esri (Thailand), NGCC, (c) OpenStreetMap contributors, and the GIS User Community