

Mie Prefecture

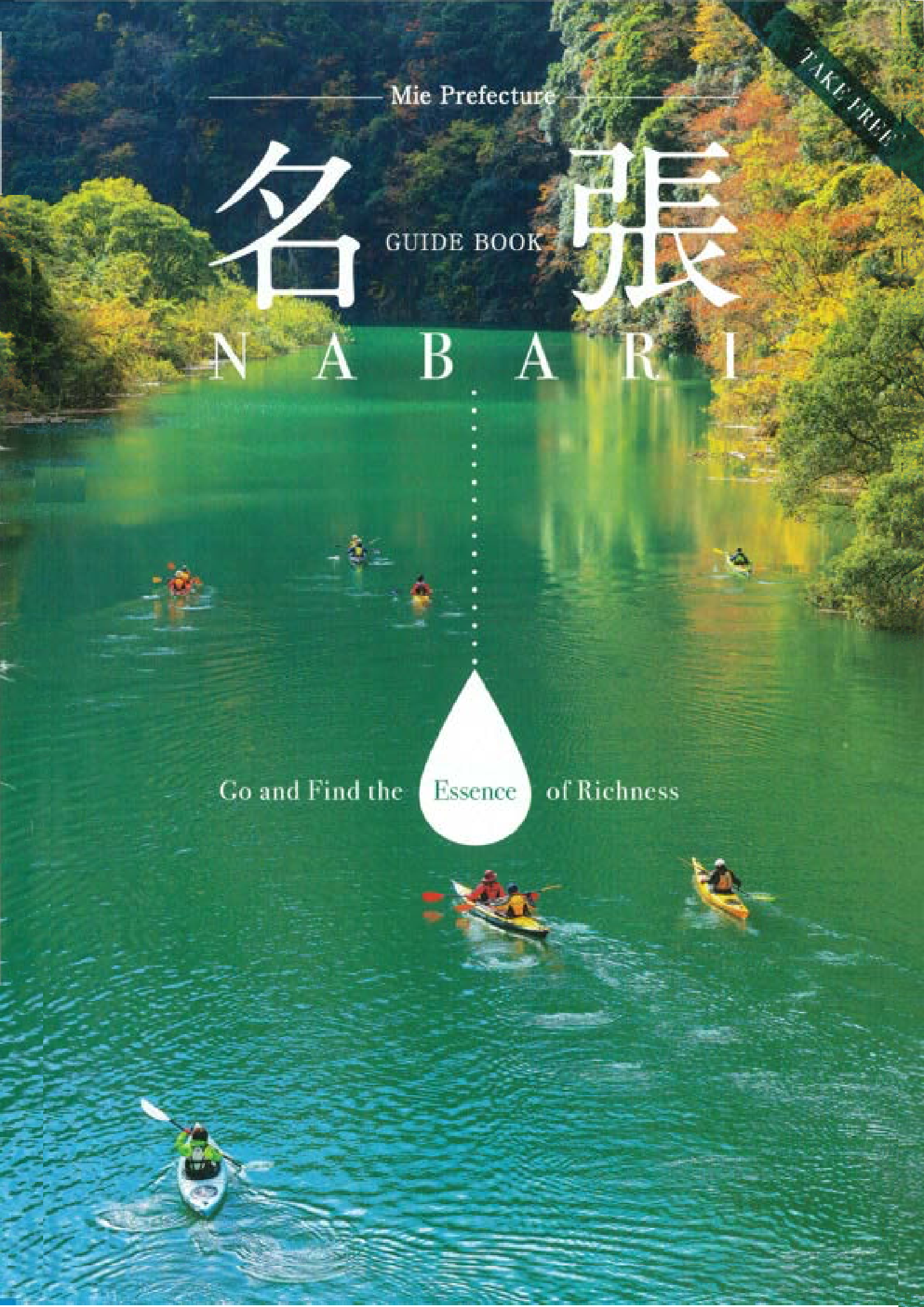
TAKE FREE

名張

GUIDE BOOK

N A B A R I

Go and Find the Essence of Richness





Contents

6 Essence of Pleasure
[Fun Nabari Activities]

14 Essence of Grace
[Historical Culture]

16 Essence of Taste
[Food /Local specialties /
Japanese sweets]

18 Essence of Healing
[Onsen; Hot Springs]

20 EVENT
CALENDAR

22 Nabari City
Information

Nabari offers the **Essence of Richness** that enhances daily life.

You are moved by the beauty of crystal clear waters, noticing that the lush, green mountains are so deep, and smiling when you feel the warmth of the people you meet when traveling.

These are elements of the **Essence of Richness** that will further enhance your daily life.

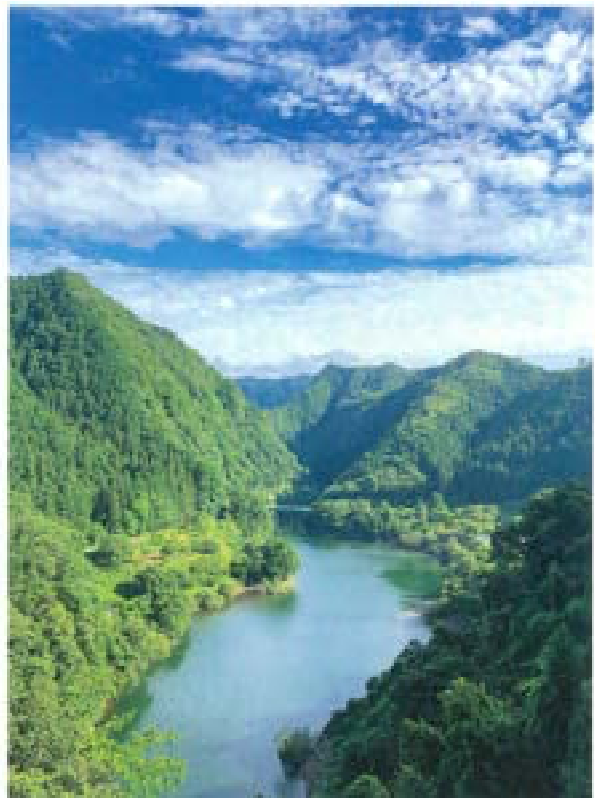
Why don't you go and find the part that enriches you?



Fresh green Akame 48 Waterfalls like a series of waterfall drawings in a picture scroll



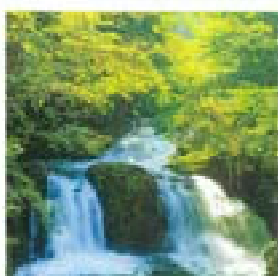
Hydrangea in full bloom at Miroku-ji Temple



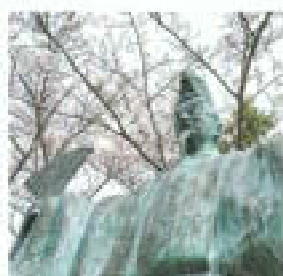
Lake Shorenji reflects the green of the mountains on its surface



Kocho-dani Valley—The rock surface is covered with autumn leaves (Mt. Meoto-yama)



Ninsei Falls, one of the best five of the Akame 48 Waterfalls



Kari'ami, who achieved perfection in a Noh play



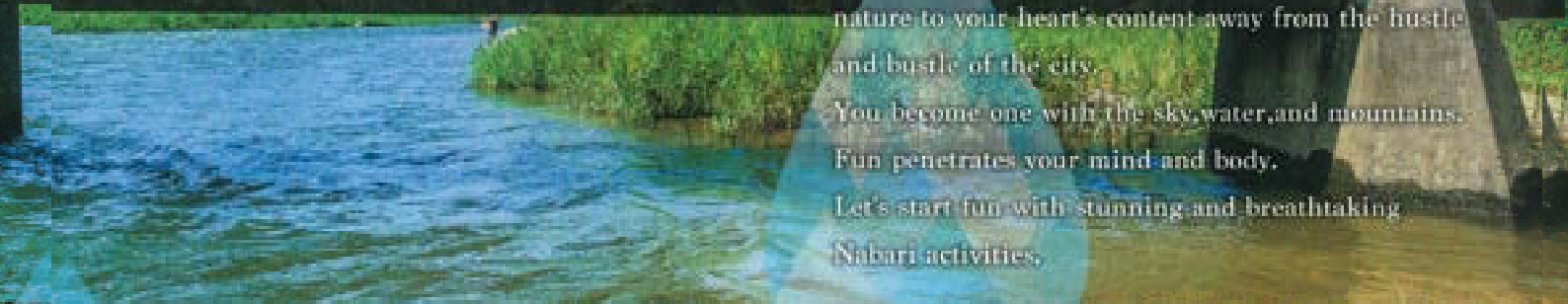
Canola flowers in Mihata with the Limited Express Shimakaze of Kintetsu Railway



Let's start fun
Nabari activities
to get your own Essence.



There is place where you can fully enjoy nature to your heart's content away from the hustle and bustle of the city. You become one with the sky, water, and mountains. Fun penetrates your mind and body. Let's start fun with stunning and breathtaking Nabari activities.







Waterside Experience at the Akame 48 Waterfalls



Fun Nabari Activities

Essence of Pleasure

Adventure Tour to the Headwaters of Akame Valley

④ From June to October ⑤ Adult: 4,500 yen, junior high school students or younger children: 4,000 yen ⑥ 0125-64-2035 (Akame-shijima-cho-taki Ecotour Desk)*Participation by children under 10 years of age is not allowed.

Ecotours in the nature areas around the Akame 48 Waterfalls are organized according to season. You will be genuinely moved by the experiences in a natural environment of vivid green trees in a forest air filled with negative ions.



Standing under a Waterfall and Making Yourself Grow Ecotour

④ From June to October ⑤ 1,500 yen (16 years of age or older) ⑥ 0125-64-2035 (Akame-shijima-cho-taki Ecotour Desk)

Nabari is about the richness of nature, such as the Akame 48 Waterfalls and Kaochi-dani Valley. A variety of extremely exciting activities are available in a stunning and breathtaking landscape. Experience the pleasure of becoming one with nature.

BBQ & Playing by the River

You can enjoy, camping as well as day camp at the Akame 48 Waterfalls Campground, Nagase River Waterside Park, has the barbecue area is free to use; and Hinachi Dam Downstream Park, has a popular site for swimming.



Hinachi Dam Downstream Park

📍 Hinachi, Nabari City
☎️ 0193-63-2111 (Maintenance Office of Nabari City)



Nagase River Waterside Park

📍 Nagase, Nabari City 🕒 8:30 a.m. to 6:00 p.m.
from March to September: 0193-63-3151
from October to February: 0193-63-3151
(Maintenance Office of Nabari City)



Akame 48 Waterfalls Campground

📍 941-1 Nagasaki, Akame-cho, Nabari City 🕒 9:00 a.m.
to 3:00 p.m. 📞 Closed irregularly ☎️ 0193-63-3666

Ayu Fishing

A lot of People enjoy fishing, also the Ayu Battle in the Nabari River is held in August of every year.

📍 Nabari River, Shorenji River, and Nagase-ura River 🕒 From opening day to December 31
📌 NOTE: Fishing pass is required
☎️ 0193-64-2789 (Pro Shop Katsuki)



Shorenji Lake is popular for picnics and sightseeing drives, and it is also recommended for canoeing and kayaking.

📍 1-146 Nakahayama, Nabari City 📞 Shorenji Dam Control Center



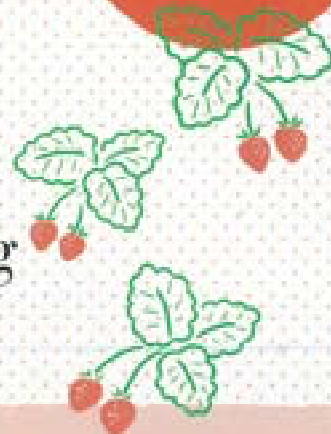
Canoeing & Kayaking



Harvesting amazingly sweet strawberries



Experience of picking grapes and strawberries



Grape varieties

- Delaware: Grains are small and very sweet.
- Steuben: It tastes like honey.
- Kyoho: It has a strong sweetness and less of a sour taste.
- Muscat Bailey A: It has a rich, sweet and sour taste.

All-you-can-eat grapes and strawberries in the Village. No reservations are needed to visit.

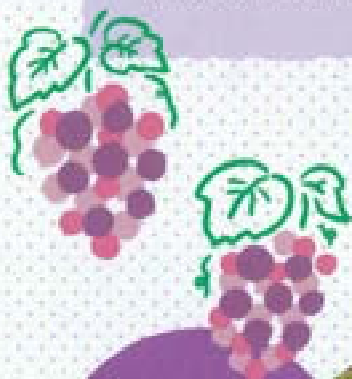
Shorenji-ko Kanko-mura (Shorenji Lake Tourist Village)



📍 978 Shorenji, Nabari City 📞 (Grape picking) 9:00 a.m. to 5:00 p.m. (last entry at 4:30 p.m.) from July 29 to October 31 (open throughout this period) (Strawberry picking) 9:30 a.m. to 4:00 p.m. (last entry at 3:30 p.m.) from January 5 to late May (open throughout this period) ☎ 0591-63-7000

Strawberry varieties

- Akihime: The pulp is soft and very sweet.
- Yotsuboshi: It has the naturally sweet and sour taste of strawberries.
- Benihoppe: The pulp is very sweet and firm.
- Kaorino: It is sweet with a strong flavor.



Grape picking is all-you-can-eat with no time limit





Autumn Leaves Hiking with Breathtaking Panoramic Views

Trekking, overlooking Akame Valley colored in red from the autumn leaves.

- 📅 From late October to late November
- 👤 3,100 yen 📞 0595-64-2095(Akame-shijima-hachi-taki Ecotour Desk)



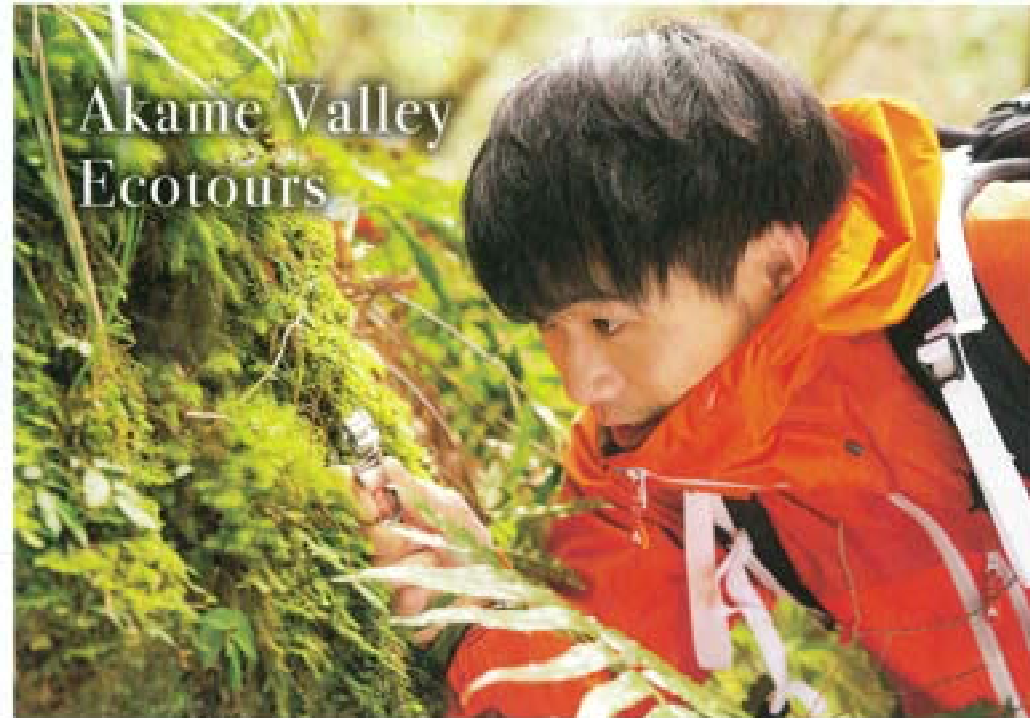
Edible Wild Plants Picking Ecotour

After picking the edible wild plants, eat them with tempura.

- 📅 From mid-March to late April
- 👤 Adults 2,500 yen, Junior high school students or younger children 2,000 yen
- 📞 0595-64-3095 (Akame-shijima-hachi-taki Ecotour Desk)

We organize ecotours that allow you to observe many species of wild fauna and flora, including the Japanese giant salamander, a special natural monument. You can also touch and interact with some wild animals and plants.

*Every ecotour needs to be booked at least two days in advance.



Exciting Moss walking with a Guide

Participants walk through the valley with a guide, examining moss with a magnifying glass.

- 📅 From March 1 to November 30/10:00 a.m. to noon, 1:00 p.m. to 3:00 p.m.
- 👤 Consecutive holidays called Golden Week (around early May) and from July 31 to August 31
- 👤 3,500 yen
- 📞 0595-64-2095(Akame-shijima-hachi-taki Ecotour Desk)

Ninja Training Experience

Anyone can experience real ninja training at the Akame 48 Waterfalls, which are the legendary place for ninjas of the Iga school.

- 📅 Morning session 10:30 a.m. - 4:00 p.m. / Afternoon session 1:30 p.m. - 4:00 p.m.
- 👤 Each session is approx. 90 minutes
- 👤 Adults: 3,000 yen, Elementary and junior high school students: 2,700 yen, preschool children: 2,300 yen
- 📞 0595-64-3095 (Akame-shijima-hachi-taki Ecotour Desk)

Intrusion technique



Mizugumo (water spider) technique



Shuriken (ninja stars) technique



Column



Akame Nature and History Museum

Various exhibits regarding the nature and history of Akame Valley, as well as the origin of ninja, are exhibited.

- 📍 671-1 Nagasaka, Akame-cho, Nabari City
- 🕒 9:00 a.m. to 5:00 p.m.
- 👤 Open throughout the year (closed on a temporary basis, such as the year-end/New Year holidays)
- 👤 Free
- 📞 0595-41-1100(Akame Visitor Center)



Exploring by bicycle, motorcycle, or car Be Fascinated by the Water Tour of Dams



You can tour dams of the Kizu River system along the Hase-kaido Road connecting Mie Prefecture with Nara Prefecture. Let's get around dams and explore the area.

Kizu River Dam Management Center

① 281-1-2 Shimobarauchi, Nabari City
② 033-64-8861



Takayama Dam

① 45-1 Tsurugi, Toyama, Mie
② 059-225-8100-8104 / Toyokuni-cho, Kyoto Prefecture

Hinachi Dam

A multipurpose dam to supply the water to the cities of Nara, Kyoto, and Nabari.

① 1-101 Kaminouchi, Nabari City

Nunome Dam

① 1-1-2 Kawanagata-cho, Nabari City

Muro Dam

① 2885 Muro-cho, Uda City, Mie Prefecture

Shorenji Dam

A multipurpose dam with a monorail for management.

① 1-180 Wakasayama, Nabari City

How about a break with dam curry and rice?



Refer to the linked flyer.

Surrounded by the breathtaking scenery of Shorenji Lake and the Kaochi-dani Valley

The breathtaking scenery of Shorenji Lake and the Kaochi-dani Valley varies from season to season, which pleases you throughout the year.



Shorenji Lake

Shorenji Lake is also a popular place for recreation, such as bird-watching and fishing.

360°VR



Information Center for Grape Picking

Shorenji Lake

Bus stop: Shorenjikomae

Benten Bridge

Shorenji Bridge

Shinobi-fuchi

Kaochi Bridge

Bus stop: Kaochidani

Rakan-iwa

Kaochi-dani Valley

Nozoki-iwa

Byobu-iwa

Tenma-rei

Kajika Bridge

Namera-tani

Shika-otoshi

Kamenose-tani

Kimen-iwa / Musha-iwa

Column



Sekita-jinja Shrine

In the fall, the approach to the shrine is fully covered by the fallen golden ginkgo leaves.

21-62 Nabumi, Nabari City
0595-64-0725



Kaochi-dani Valley

The valley is covered by wild cherry blossoms and azaleas in spring, and blazing autumn leaves in fall.

Chuten-iwa / Shimo-kyozuka / Kami-kyozuka

Momiji-dani

Kotaro-iwa

Bus stop: Dohai

*Most spots in the Kaochi-dani Valley are still called by the names given by Kamata Ryosha, a chief retainer of the Todo clan in the Edo period.

Mt. Nagasaka
Exit



There is a place
you can view the waterfalls
from above!



Bus stop:
Akamedaki

Ninja-no-mori
(Forest of Ninja)

Enju-in Temple

Town around
the front area of the
Akame 48 Waterfalls

Spiritual sites to purify your mind and body

Akame-Shijuhachi-Taki (Akame 48 Waterfalls)

The Best Five of the Akame 48 Waterfalls

Among the Akame 48 Waterfalls in the Akame Valley, which stretches for approx. 4 km, five falls especially regarded as highlights are called Akame-go-baku (the best five of the Akame 48 Waterfalls).



Akame Visitor Center
- Ecotour Desk
- Akame Nature and
History Museum

Nihon Sansho-uo Center
(Japan Salamander Center)

Mountain
Entrance

Gyoja Falls

Choshi Falls

Reija Falls

Fudo Falls

Otome Falls

Hachijo-iwa

Dainichi Falls



Fudo Falls

Famous waterfall
named after Fudo
Myoo. The view from
Fudo Bridge over the
valley is spectacular.



Stroke Akame Bull,
which is said to
bring good luck.

230 m from
the mountain
entrance
6 minutes on foot

Become one with
mother nature by
training under the
waterfall
at Dainichi Falls!



Nunobiki Falls

The waterfall drops down
from a height of 30 meters
like a strip of cloth. The basin
is said to be 30 meters deep.

900 m from
the mountain
entrance
23 minutes on foot



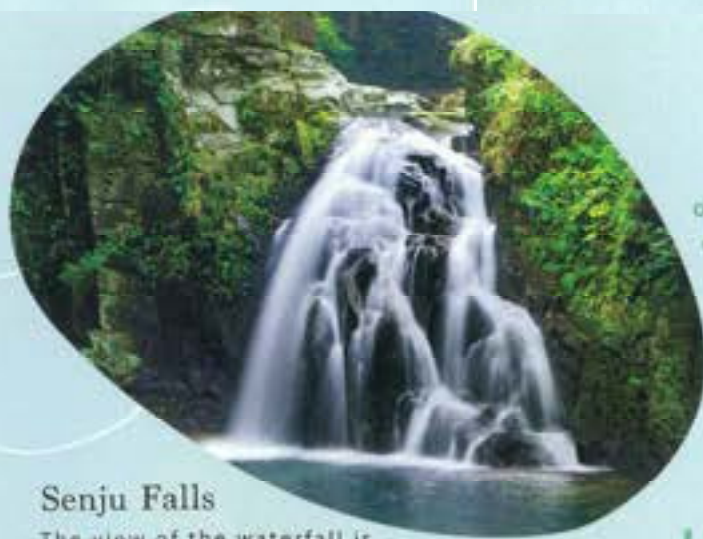
Essence only in Nabari

Nihon Sansho-uo Center (Japan Salamander Center)

Nine species of approximately 50-odd salamanders are
exhibited. You can carefully observe the habits of this living fossil.



① Mt. Nagasaka, Akame-shi, Nabari City ② 9:00 a.m. to 5:00 p.m. between
the second Saturday in March and the second Sunday in December, add from 3:00
a.m. to 4:30 p.m. between the second Monday in December and the second Friday in
March ③ From December 28 to December 31 ④ The admission fee is included in
the entrance fee for the Akame 48 Waterfalls ⑤ 0293-69-3004 (Specialized language
& signposting: Akame-shi/Choshi City Valley Conservation Association)



Senju Falls

The view of the waterfall is picturesque as it flows over the rocks like a thousand arms.

800 m from the mountain entrance
20 minutes on foot



Scan the QR codes of the Best Five of the Akame 48 Waterfalls.

360° VR experience



Ninai Falls

The 8-meter-high waterfall separates into two flows across the rocks. This view is acknowledged as the best in the valley.

2,600 m from the mountain entrance
70 minutes on foot



Biwa Falls

The basin of Biwa Falls reminds one of a rock bath because it is surrounded by a cliff. The name of the falls comes from its shape like a biwa lute.

2,870 m from the mountain entrance
80 minutes on foot



Mt. Nagasaka trekking course

Specified Nonprofit Corporation
Akame-shijuhachi-taki
Valley Conservation
Association



Historical Culture

Essence of Grace

"People in remote times used to walk on this road, too...."
Just walking the streets thinking of its history, and you will definitely encounter the appeal of the historic city of Nabari.

Hase-kaido Road was an important road from the Kansai region to Ise Jingu in the Edo period. There remain many historic places along the road, which provides an atmosphere of the old days.



Hase-kaido Road

初瀬街道



The monument commemorating the birthplace of Edogawa Ranpo

Nabari City is the birthplace of Edogawa Ranpo, the father of Japanese detective novels.



The monument commemorating the birthplace of Edogawa Ranpo

Hosokawa Family old Residence, Yanase-shuku



Hosokawa Family old Residence, Yanase-shuku
The remains are those of the residence built as a branch store of the Hosokawa family, who was a medicine merchant in the Edo period. It is used as the tourism exchange base today.

① 56 Shimada-cho, Nabari City ② 9:00 a.m. to 5:00 p.m.
③ Monday (Tuesday if a national holiday falls on Monday) and the year-end/five-year holidays ④ 0252-62-7760

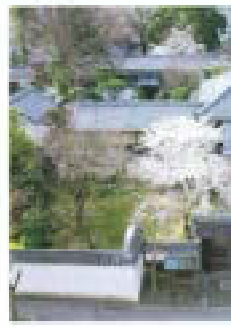


Urufushine Shrine
Forty-five Noh and kyogen masks donated by the Nabari Todo Family are exhibited.

① 3319 Hiras, Nabari City ② 0595-83-0486, 0595-64-0519

Nabari Todo Family Residence
This is one of few existing residences of a high-ranking samurai. Cultural assets that include *oka-gusoku* armor are on display and open to the public.

① 64-3 Marunouchi, Nabari City ② 9:30 a.m. to 3:00 p.m. ③ Mondays and Thursdays (the next day if a national holiday falls on a Monday or Thursday), from December 29 to January ④ General public: 200 yen, High school students: 100 yen, Elementary and junior high school students: free ⑤ 0252-62-0401



Other cultural properties



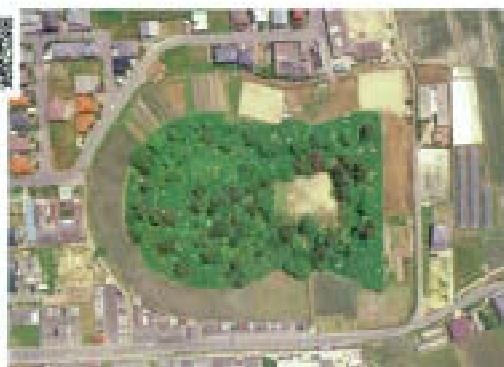
Shinden-suiro (Shinden Waterway)

Constructed 350 years ago, this waterway is still in use to irrigate rice paddies.



Umazuka-kofun Tumulus

Constructed in the late 5th century, when you stand on the keyhole-shaped mound, you have a view of the Mihata area.



Hiyawai



Hiyawai means a maze-like narrow alley between houses.

Joka River



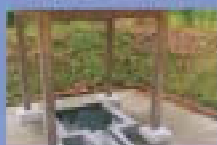
This river was named by Todo Takayoshi when he built the castle town.

Hana-ikada (flower raft)



Flower rafts loaded with Japanese irises are common features in the rainy season.

Ryuo-sui Water



This spring water has been popular as a spiritual site since the Edo period.

Nightlight

This light is said to have been built in 1866 (Mei 2).



Mihata Kofun-gun (Mihata Burial Mounds)

美旗古墳群

Seven tumuli centered around five keyhole-shaped mounds remain in the Mihata Tumulus Group, which is the largest scale in the Iga region.



Kan'ami Furusato Park
Nabari City has the place where Kan'ami, who perfected the Noh play, founded his theater group.

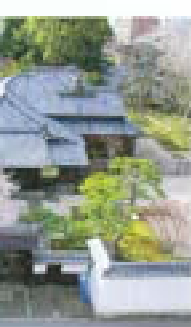
📍 Kamobata, Nabari City 📞 0595-63-2892
Nabari City Lifelong Culture Learning Office

Column



Nabari City Folk Museum
Artifacts from the Jomon, Yayoi, and Tumulus periods are regularly exhibited.

📍 2270 Abeta, Nabari City (former Nishiku Elementary School) 🕒 From 9:30 a.m. to 4:30 p.m. 🗓 Mondays and Thursdays (the next day if a national holiday falls on a Monday or Thursday). From December 28 to January 4 🆓 Free 📞 0595-64-2890



Local specialties that only Nabari City can produce, thanks to the clear water and the difference in the temperature characteristic of a basin, are launched one after another. Try and thoroughly taste every specialty.

Full lineup of delicious foods

Local specialties

Detailed information on local specialties

Nabari City Tourism Association



Iga-mai rice

The more you chew the rice, the more you can savor its sweet taste. Iga rice tastes delicious even when cold.



Nabari-gyujiru (Beef soup)

The umami flavor from the Igagyu beef and the sweetness of vegetables are blended in the soy sauce broth.

Igagyu beef

The characteristics of Igagyu beef are tender and light with sweet fat.



Local sake

Our sake, made from good-quality Iga rice, has a mellow, soft flavor.



Food /
Local specialties /
Japanese sweets

Essence of Taste



Hekoki-manju bun

Hekoki-manju buns are made from sweet potato after kneading, steaming, and baking.



Katayaki

Renowned confection with a simple, tough, and chewy taste, which was a ninja's portable food.

Column



Machi-no-eki Nabari Farmer's Market

The shop sells local products of Nabari, including Iga-mai rice, Igagyu beef, and fresh agricultural produce.

- 📍 77-1, Kiodai 2 Bancho, Nabari City
- 🕒 From 9:00 a.m. to 6:00 p.m. 🗓️ The year-end/New Year holidays
- ☎️ 0595-62-1755



Taste associated with Iga ninja
Matsuike / Katayaki

- ① 15-71-4 Higashimachi, Nabari City
- ② Closed irregularly
- ③ 0195-63-0907

Soft baked sweets
Oyado Seika / Bean-paste-filled Katayaki

- ① 18 Sekiguchi, Nabari City
- ② Closed irregularly
- ③ 0195-63-0715



Traditional flavor since the founding in 1966
Marufuku Seiniku-ten / Japanese style croquette and meatball

- ① 37-2 Minomachi, Nabari City
- ② Wednesdays
- ③ 0195-63-3400

Home-made monaka by yokan confectioners
Yamatoya / Home-made monaka (bean-paste-filled wafers)

- ① 55 Honmachi, Nabari City
- ② Closed irregularly
- ③ 0995-63-2573



Take a break in the Japanese-style room of a traditional townhouse built during the end of the Edo period.

Hanabishi-an / Local sake and snacks

- ① 270 Nakamachi, Nabari City
- ② Thursdays
- ③ 0195-63-2032

Soft and rich taste
Sawada / Nabari Anpanyaki

- ① 81 Minamimachi, Nabari City
- ② Tuesdays
- ③ 0995-63-2397



Egg crackers with a cookie-like texture

Yamamoto Shojudo / Ni-sen-doka senbei

- ① 272-1 Nakamachi, Nabari City
- ② Closed irregularly
- ③ 0195-63-0113



Fluffy Castella-manju
Hoshiyasu / Kikyo-no-mai

- ① 1-66-70 Kamahachi, Nabari City
- ② New Year's Day
- ③ 0195-63-2050

Steamed buns with a smooth bean paste filling
Sankyuya / Salsuke-manju



Buns in the traditional style
Sankyuya / Nabari-manju, Maizuru, and Nagasaki

- ① 225-4 Hirasu, Nabari City
- ② Open every day
- ③ 0195-63-0353

Light and fluffy pie pastry
Tomiyama Okaen / Pie-manju

- ① 145 Matsusakimachi, Nabari City
- ② Closed irregularly
- ③ 0225-64-3448



Barimekko's recommendations

Exploring Japanese Sweets

Detailed information for eating around Nabari City Tourism Association



We welcome guests with sweets.



Please try to eat around in Nabari!

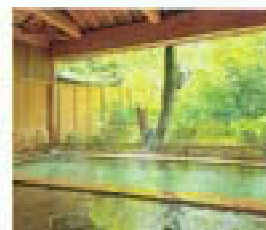


You can feel relieved here in Nabari,
where high-quality water slowly relaxes
your mind and body.
Let us show you our well-known
hot springs surrounded by nature.

List of
Accommodations



Hot springs that are good for
the skin and associated with
Iga ninja. Enjoy a beautiful
view of the valley in the
open-air bath.



📍 682 Nagasaki, Akamecho, Nabari City 📞 Day trip bath:
adults 900 yen, children 500 yen 📞 07545-62-1255

Onsen; Hot Springs

Hideaway in Iga
Akame Onsen
Kakurenoyu
Taisenkaku

Essence of Healing

Akame Onsen
Yamanoyu
Yumoto Akame
Sansuien



Hot springs with a good reputa-
tion where the skin becomes
smooth. Indoor baths, open-air
baths, and a family bath filled
with a Japanese atmosphere
are available.

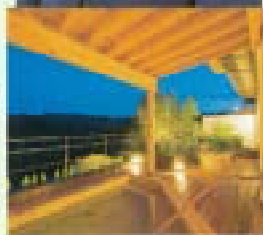


📍 1201 Yabuhira, Akamecho, Nabari City 📞 Day trip bath: adult
800 yen, children 500 yen *Family bath is available 📞 07545-63-1034



Kaochidani Onsen, Meiko-no-yu , Open-air bath with a panoramic view Shorenji Lake Hotel

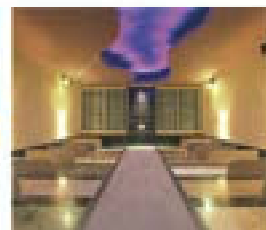
The water of our hot springs is colorless, transparent, and smooth on the skin. We will serve you by offering comfortable guest rooms and cuisine made with local ingredients.



📍 1932 Minenoyama, Shorenji, Nabari City 📞 Day trip bath: adults 800 yen, children 500 yen 📞 0584-63-8211



Our spa offers not only an open-air bath and a highly concentrated carbonated spring water bath but full of ancillary facilities, such as a large bed-rock bath and a restaurant.



📍 77-1 Kijori 2 Bakocho, Nabari City 📞 Day trip bath: adults (junior high school students or older) 800 yen, children (elementary school students or younger) 400 yen, infants (3 years old or younger) free
*Additional fee for large bedrock bath Relaxing Bedrock SPA Kijori: elementary school students or older 700 yen 📞 0584-26-1126

Relaxing Spa in Forest Nabarinoyu



E V E N T C

春 夏

spring summer



Iga-ichinoi's Event to Prepare and Serve Torches

February 11 and March 10 and 12

Traditional event to donate torches used for Omizutori at the Nigatsu-do of the Todai-ji Temple.



Live decoy fishing for ayu (sweetfish)

From June to August

A fishing method to catch ayu using another live ayu called a decoy takes advantage of the ayu's habits.



Spring Misogi Festival at Akame 48 Waterfalls

Sunday in late March

Austere disciplines, such as large-scale Goma, cold-water ablutions, and fire walking, are conducted.



Atago Fire Festival / Nabari River Fireworks Festival

Saturday after July 24

A ritual event where residents cross the Nabari River, hold a torch in one hand, and get into the rhythm of the Atago taru-daiko (barrel drum).



Nabari Cherry Blossom Festival

From late March to early April

A tunnel of approximately 800 cherry trees in the Nabari Central Park is overwhelming. The cherry blossoms are illuminated at night.

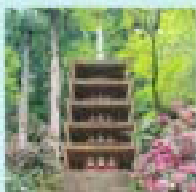


Approximately 5,000 launched fireworks illuminate Shinmachi along riverside of the Nabari River.

Tourist Information around Nabari City

Muro-ji Temple

Uda City, Nara Prefecture

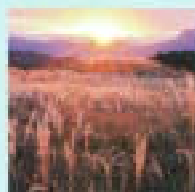


This famous temple has been open to women from long ago as a dojo of Shingon Esoteric Buddhism.

☎0745-93-2003(Muro-ji Temple)

Soni Highland

Soni Village, Nara Prefecture



In the fall, this is a hugely popular place with a superb view of the entire highland covered by Japanese pampas grass.

☎0745-94-2106(Soni Village Tourism Association)

Mt. Miune

Mitsue Village, Nara Prefecture



Every season offers a variety of scenes, such as white azaleas in early summer and rime in winter.

☎0745-95-2070(Mitsue Village Tourism Association)

A L E N D

autumn

A R

winter



Nabari-kaido Road Market

Saturdays and Sundays
from early to mid-October

Exhibition of local products, Nabari-kaido Handmade Market, and a flea market are held.



Nabari Autumn Festival

Last Saturday and
Sunday in October

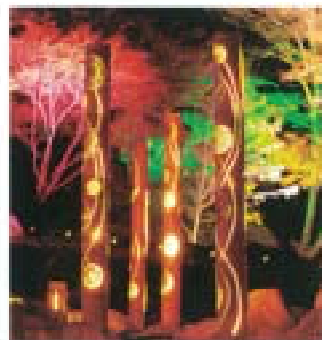
Portable shrines and floats parade through the streets. Shishimai (lion dance) is also performed as a dedication.



Kan'ami Festival

The first Sunday
in November

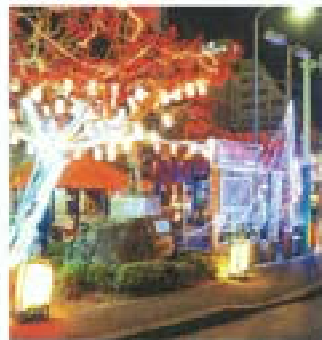
In memory of Kan'ami, kyogen performed by children is offered to him.



Bamboo Lantern Illumination at Akame 48 Waterfalls

From the end of
October to the end of March

One thousand bamboo lights create a fantastic atmosphere.



Nabari Urekite Period (Meaning the Special Event to Thank Everyone for Visiting Nabari)

From late November to
mid-March

A fun illumination event supported by neighboring restaurants and pubs.



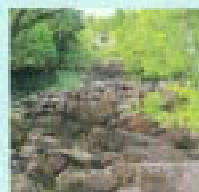
Yoka-ebisu Festival

February 7 and 8

This festival bustles with crowds to see a parade of the Seven Lucky Gods and to attend the clam fair.

Forest Park Konoyama

Yamazoe Village, Nara Prefecture



You will find outdoor attractions anywhere on Mt. Konoyama, including the Mee-Mee Farm and Nabekura-kei Valley.

☎0743-87-0285(Konoyama Tourism Association)

Hiyoshinosato Marche

Higashiyoshino Village, Nara Prefecture



The shop sells local specialties, vegetables, and light meals from Higashiyoshino Village.

☎0746-42-0900(Hiyoshinosato Marche)

Iga Ueno Castle

Iga City, Mie Prefecture



This castle is also called Hakuho Castle(White Phoenix Castle). Its stone wall, which boasts the highest level in Japan, is another must-see attraction.

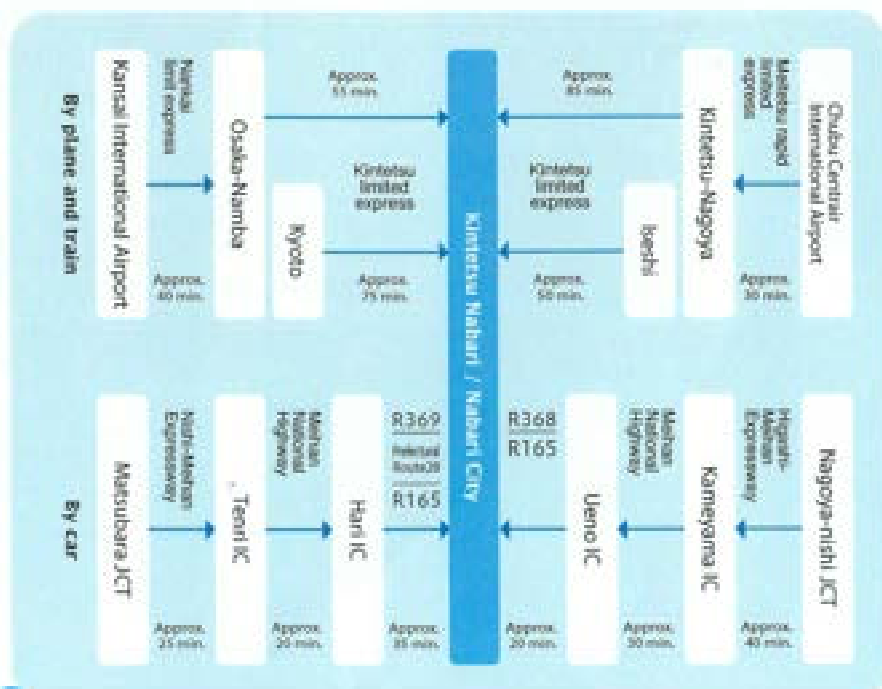
☎0595-21-3148(Public Interest Incorporated Foundation Iga Cultural Industry Association)

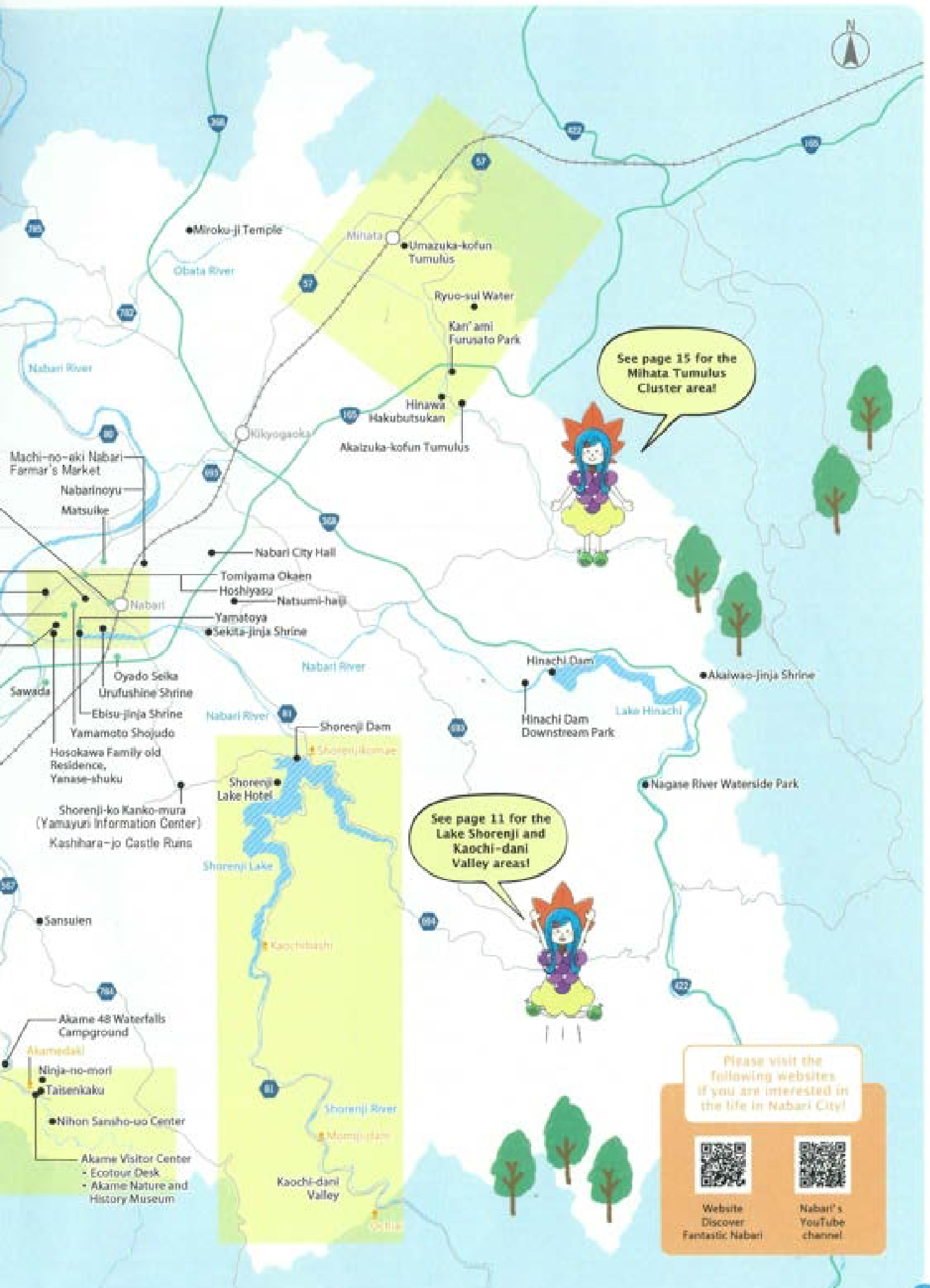
Nabari City Information

Nabari is an isolated village, whose name have been derived from "hiding."

The essence that enriches daily life is hidden within the inexhaustible charm of Nabari City with its valleys, autumn leaves, ninja, and hot springs.

 Shinkansen
  JR
  Kintetsu Railway
  Iga Railway
  Other railways
 Expressway/tollway
  Methan National Highway
  National Highway
  Local road
  Bus stop





See page 15 for the Mihata Tumulus Cluster area!

See page 11 for the Lake Shorenji and Kaochi-dani Valley areas!

Please visit the following websites if you are interested in the life in Nabari City!



Website Discover
Fantastic Nabari



Nabari's
YouTube channel

Volunteer Tour Guide



Okitsumo Volunteer Tour Guide

The residents of Nabari, as storytellers, introduce the abundance of tourist resources in the Nabari area. Various guided tours are available. Please visit Nabari and join a tour. *Tours are organized annually (six times a year).

④ Support money for the volunteer guide: 1,000 yen ④ 0595-63-9087 (Tourist Information Center in front of Nabari Station, Nabari City Tourism Association)*An application is needed to request a tour guide. (FAX:0595-63-9138)

Essence of One Chance in a Lifetime

Iga Machikado Hakubutsukan (Museums in the Street Corners of Iga)



Recommended! Hanabishi-an

Historical shadow plays, which incorporate the history and culture of Nabari, such as the ninja and Edogawa Ranpo, are performed. (Reservations are needed for the shadow plays. Audience capacity is about 5 to 30. Fee: 300 yen/person, tea cake included.)

④ 170 Nakamachi, Nabari City (Sumita Liquor Store) ④ From 9:00 a.m. to 6:00 p.m. ④ Thursday ④ 0595-61-0033

Recommended! Hinawa Hakubutsukan (Match Cord Museum)

You can have the experience of making a high-quality match cord, which has been manufactured for more than 300 years in Nabari City. In winter, you can also see the whole process of manufacturing.

④ 908 Kamiobira, Nabari City ④ Open from November 1 to around March 10 (Open as needed) ④ 0595-65-3112

Iga Machikado Hakubutsukan
(Museums on the Street Corners of Iga) ▶



Tourism Exchange Office, Nabari City, Mie Prefecture

1-1 Konodai, Nabari City, Mie Prefecture 518-0492

TEL 0595-63-7648

FAX 0595-64-0644

Mail kankou@city.nabari.mie.jp

URL <https://www.city.nabari.lg.jp/>



General Incorporated Association, Nabari City Tourism Association

Nabari Sangyo Shinko Center 1F

022-2 Minamimachi, Nabari City, Mie Prefecture 518-0720

TEL 0595-63-9148

FAX 0595-63-9138

Mail info@kankou-nabari.jp

URL <http://www.kankou-nabari.jp/>



Issued March 2020